

PART OF NE 1/4, SEC. 13 T.6N., R.1E., & PART OF NW 1/4, SEC 18, T.6N., R.2E., S.L.B. & M.

16

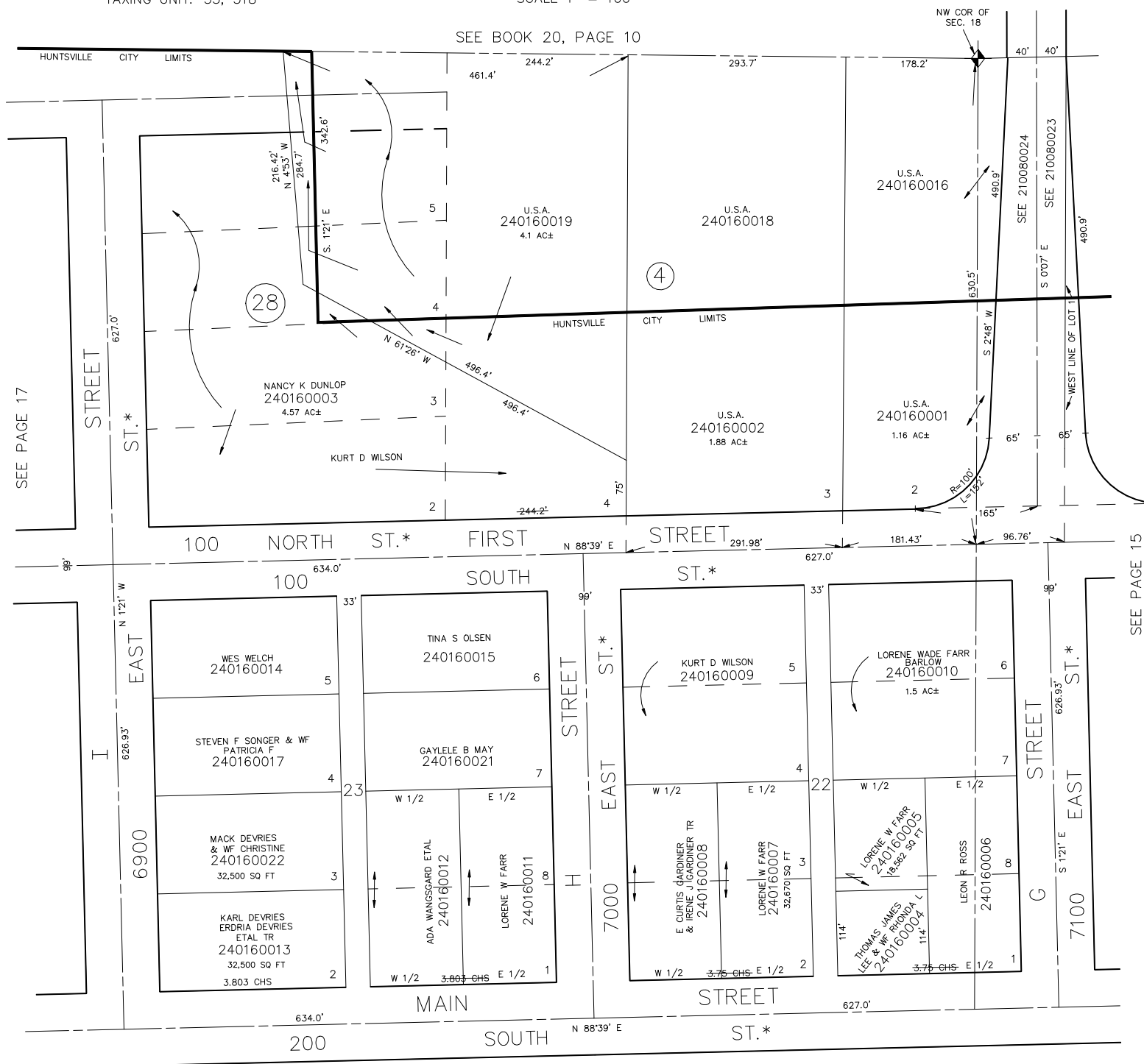
# HUNTSVILLE SURVEY

BLOCKS 22, 23 & 28, PLAT A & LOTS 2 TO 4, BLOCK 4, PLAT B

TAXING UNIT: 35, 318

SCALE 1" = 100'

SEE BOOK 20, PAGE 10



\*NOTE  
STREET NUMBERS ACCORDING  
TO COUNTY SURVEYOR